

Energy efficiency from the ground up

Build smart and save big

Learn more

Take advantage of significant incentives and long-term savings by building energy efficiency into your new construction project.

Call our Idea Center at **800-493-3299**,
contact an Energy Management Representative,
or visit [otpc.com/DesignPlus](https://www.otpc.com/DesignPlus) for more information.



215 South Cascade Street
Fergus Falls, MN 56537

[otpc.com](https://www.otpc.com)

Integrated Building Design Plus

Participating in our Integrated Building Design Plus program could mean significant energy savings for the life of your building.



Integrated Building Design Plus focuses on energy efficiency for building's lifetime

Our goal is to make sure that, years down the road, energy performance still works for you.

Are you considering constructing a new building for your business? You're probably imagining how it will look from the outside—whether you want to use brick or wood. Maybe you're wondering whether to put in granite countertops in the bathrooms and kitchen area. Right now, you're in the dream stage of planning. Perhaps you've even floated some ideas to an architect and have a rough blueprint.

But have you thought about your long-term energy costs? While energy efficiency may not have the glamour of granite countertops or brick facades, the decisions you make can have long-term impacts on your bottom line, value of your building, and productivity of your employees. That's where we can help.

"You're creating a once-in-a-lifetime building, and you're putting a lot of hopes and dreams into that building," said Marketing Programs Supervisor Jon Fabre. "Our goal is to make sure that, years down the road, energy performance still works for you as well."

Is my business eligible?

Participating businesses must:

- Receive electric service from our company.
- Locate their project within our Minnesota service area.
- Have a project size of at least 5,000 square feet, pending additional qualifications.
- Agree to participation at the schematic or early design stage.
- Achieve projected savings at five percent beyond a baseline building.

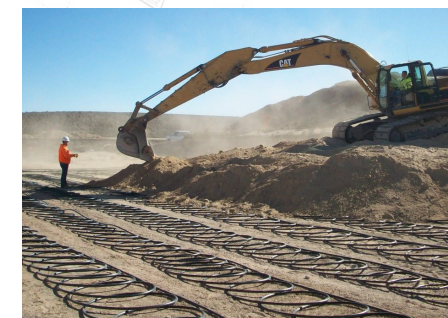
How will my business benefit?

- Free energy modeling.
- Incentives for building efficiency.
- Lifetime performance improvements.
- Support with U.S. Green Building Council Leadership in Energy and Environmental Design (LEED) accreditations.

Maximizing geothermal energy

Geothermal heating and cooling systems are cost-effective renewable resources that provide significant energy savings in nearly all buildings. Proper design of such a system early in your building process is critical. In too many cases geothermal systems are designed using "rules of thumb" resulting in oversized equipment and higher costs for building owners. The Integrated Building Design Plus program uses a sophisticated, iterative modeling process to ensure geothermal system size for your building to reduce geothermal installation costs by as much as 40 percent.

Proper loop field design, efficiency rebates, and tax credits all add up to make geothermal the most cost-effective choice for your project while assuring the lowest operating costs available over the life of your building.



Proper sizing of a geothermal system before construction will ensure maximum efficiency at minimum cost.

Variables in the energy model



Mechanical systems



Building envelope



Building orientation



Window placement and glazing options



Lighting and lighting controls

Get started today!

1. Fill out our online application and submit it online at otpc.com/DesignPlus or return a hard copy to an Energy Management Representative on our staff.
2. We'll conduct an initial review of your application. If you qualify for our Integrated Building Design Plus program, we'll be in touch with detailed information about next steps.