

# GEAR UP WITH A LINEWORKER

Lineworkers, like Service Representative Todd Barney from Perham, Minnesota, wear special protective gear to stay safe while working on power lines and other electrical equipment. Can you match the descriptions below to the safety equipment in the picture?

## MATCH THE DESCRIPTIONS



Shutgun stick

Hard hat

Rubber sleeves

Fall arrest harness

Insulated gloves

Work boots

- \_\_\_\_\_ 1. Made of vulcanized rubber to protect a lineworker from contact with an energized power source.
- \_\_\_\_\_ 2. Usually made with steel, these provide support for climbing.
- \_\_\_\_\_ 3. Made from hard plastic, this gear protects lineworkers from head injuries and falling debris.
- \_\_\_\_\_ 4. While working on power sources with their hands, this insulated rubber gear helps protect lineworkers from electrical shock.
- \_\_\_\_\_ 5. This gear attaches a lineworker to their truck to keep them secure and prevent falls.
- \_\_\_\_\_ 6. This insulated tool helps lineworkers move and adjust live electrical equipment safely.

Did you know that the safety gear a lineworker wears and carries while working can weigh up to **40 pounds**?! That's about the same weight as a kayak or a car tire!

# THAT'S A LOT

ANSWERS:  
1 = C (Rubber sleeves)  
2 = F (Work boots)  
3 = A (Hard hat)  
4 = E (Insulated gloves)  
5 = D (Fall arrest harness)  
6 = B (Shutgun stick)

# It's National Safety Month!

National Safety Month is a time to focus on how you can keep yourself and your environment free from danger. Team up with an adult and complete the below activities to help you stay safe all year long!

## Update your emergency supply kit

Put together a kit that includes everything you'd need in an emergency or if your power went out. Use the checklist at right to make sure your summer storm kit is complete.

## Practice your preparedness plan

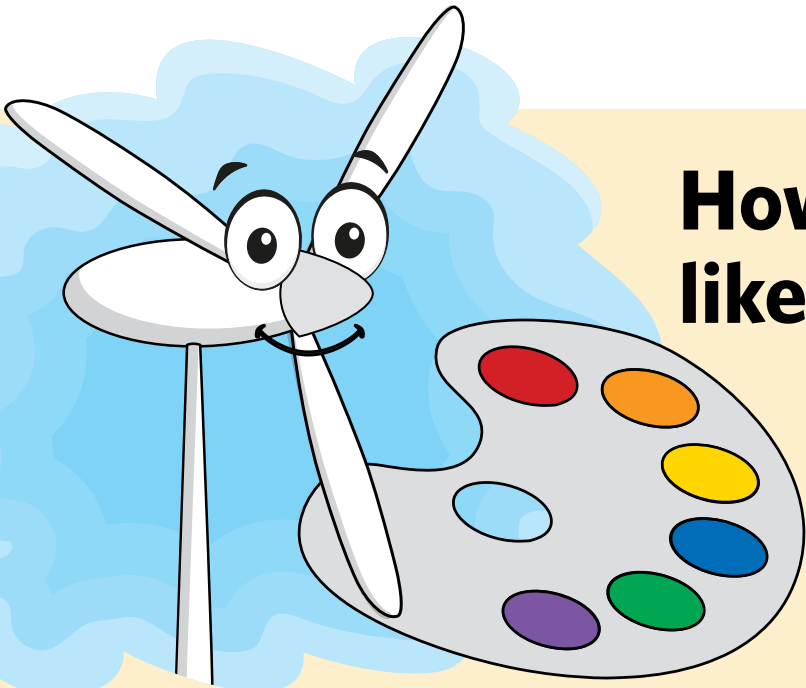
Develop a plan with your family, so everyone knows where to go and what to do during an emergency. Visit [otpco.com/DisasterPlanning](http://otpco.com/DisasterPlanning) to get started.



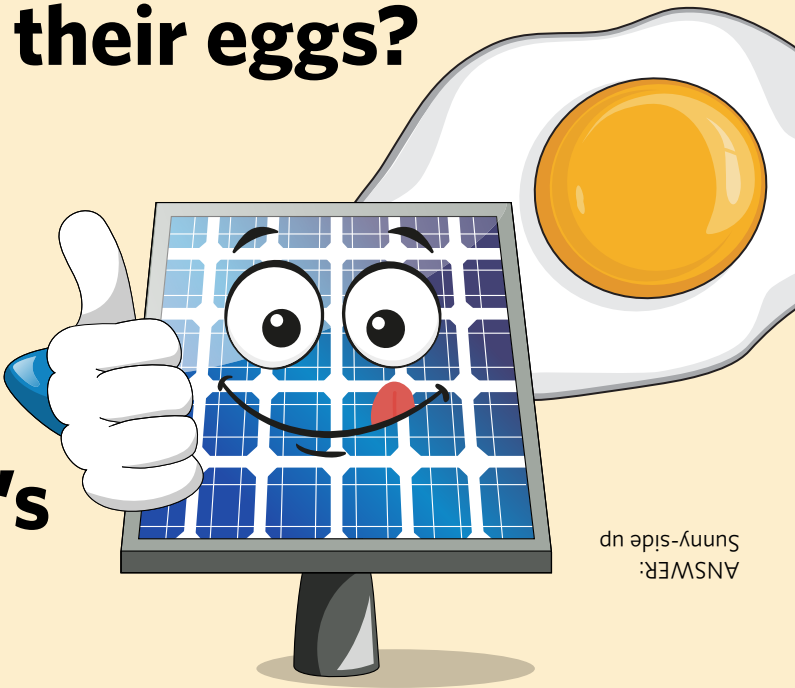
## Summer Storm Kit

- ☐ Flashlight and extra batteries
- ☐ Battery-powered NOAA\* Weather Radio and portable radio
- ☐ Food requiring no cooking or refrigeration
- ☐ Extra medicine, baby items, and pet supplies
- ☐ First-aid supplies

\*National Oceanic and Atmospheric Administration



## How do solar panels like their eggs?



ANSWER:  
Sunny-side up

## What's a wind turbine's favorite color?

ANSWER: Blue

# FOLLOW US...

## WE'RE SOCIAL

Adults, follow us on social media for ways to save energy, electrical safety tips, and company updates.



[Facebook.com/OtterTailPowerCo](https://www.facebook.com/OtterTailPowerCo)



[YouTube.com/OtterTailPowerCo](https://www.youtube.com/OtterTailPowerCo)



[Twitter.com/OtterTailPwrCo](https://twitter.com/OtterTailPwrCo)



[Linkedin.com/company/Otter-Tail-Power-Company](https://www.linkedin.com/company/Otter-Tail-Power-Company)



**Customer Connection for Kids**  
Otter Tail Power Company  
PO Box 496  
Fergus Falls, MN 56538-0496

[www.otpco.com](http://www.otpco.com)  
800-257-4044 or 218-739-8877

Send your favorite recipe to  
[communications@otpco.com](mailto:communications@otpco.com)  
or to the above address.

